



1 & 2 MACARTHUR PLACE

SOUTH COAST METRO, CALIFORNIA



- A** Starbucks
Wasabi Japanese Grill
Juice It Up
Togo's Eatery
Thai Spice
- B** Griffin Café
Lakeside Bistro
- C** Courtyard Marriott
- D** Quizno's
E's Market
Dry Cleaners
Tanning
Tailor
Double Tree Hotel
- E** Nate's Korner
Havana Coffee
- F** Mexican Restaurant
- G** Double Tree Hotel
- H** Twin Towers Café

For more information, please contact:

JOHN WEINER Lic. 1088495 +1 949 474 1800 john.weiner@cbre.com	DEAN CHANDLER Lic. 00833627 T +1 949 725 8515 dean.chandler@cbre.com	JUSTIN HILL Lic. 01424426 T +1 949 809 4064 justin.hill@cbre.com	WESTON CHANDLER Lic. 01935441 T +1 949 725 8458 weston.chandler@cbre.com
---	--	--	--



1 & 2 MACARTHUR PLACE

©2014 CBRE, Inc. This information has been obtained from sources believed reliable. We have not verified it and make no guarantee, warranty or representation about it. Any projections, opinions, assumptions or estimates used are for example only and do not represent the current or future performance of the property. You and your advisor should conduct a careful, independent investigation of the property to determine to your satisfaction the suitability of the property for your needs.





PROPERTY FEATURES

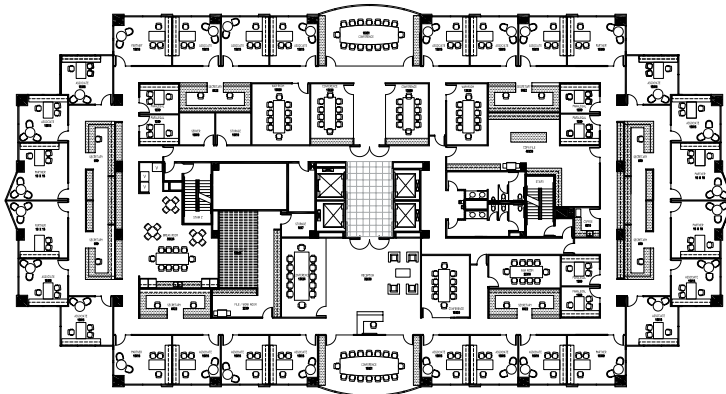
- Granite Exterior with Reflective Glass
- Large, Efficient and Flexible Floor Plates
- Strong, Stable and Professional Ownership; Equity Office is One of the Largest and Most Respected Commercial Real Estate Firms in the Nation
- Surrounded by Lush Landscaping, Open Courtyard and Fountains
- Convenient Access to 55, 405 and 73 Freeways
- 24-Hour On-Site Security, On-Site Café
- Direct Subterranean Parking Access; 4:1,000 Parking Ratio
- Building Signage Available
- Numerous Restaurants, Hotels and Services within Walking Distance
- Direct Access to the John Wayne Airport



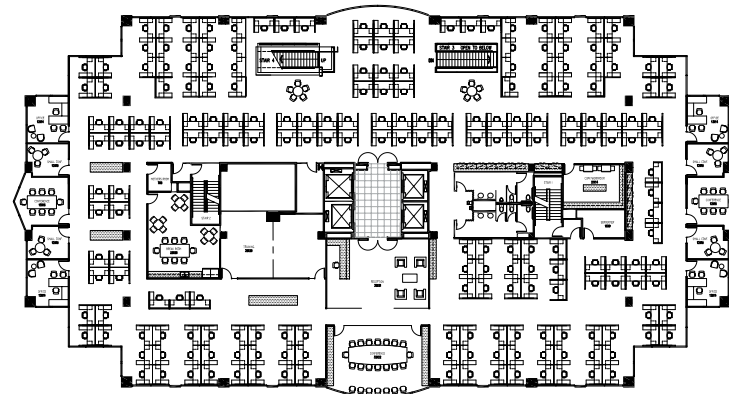
1 & 2 MACARTHUR PLACE



HYPOTHETICAL FLOOR PLANS:



34 OFFICES 20-15'x15', 8-15'x18', 6-12'x9'
 9 CONFERENCE ROOMS
 12 CUBICLES



8 OFFICES 4-13'x14', 8-10'x13'
 3 CONFERENCE ROOMS 2-13'x15', 1-32'x22'
 205 CUBICLES

